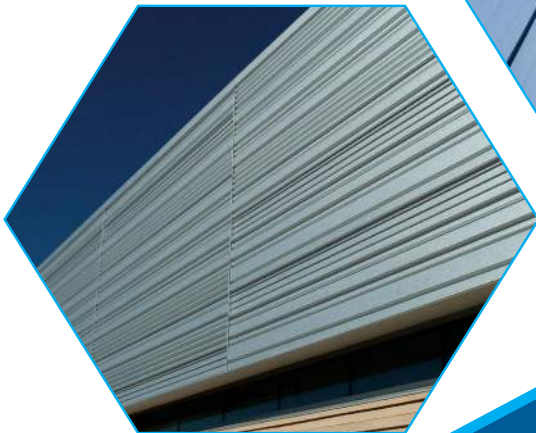
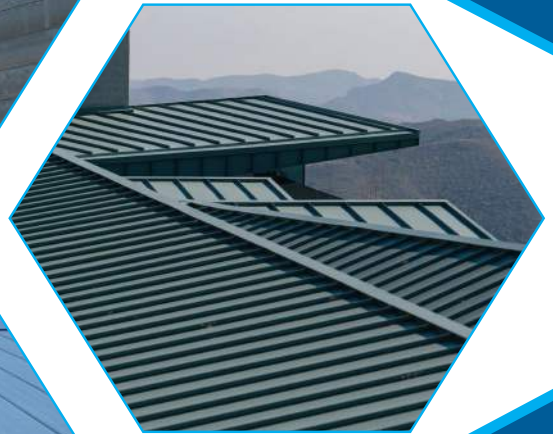
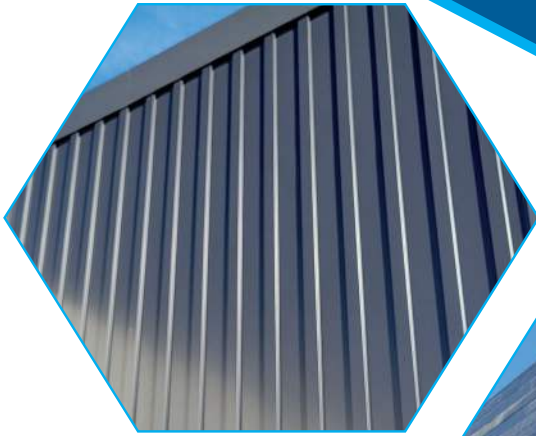


Metal Roofing & Siding Finish Options

SOUTHWEST REGION

*Standard Kynar, Definitive Matte Collection,
Metallic Kynar, Premium Finish
& Weathering Material*



**TAYLOR**

METAL PRODUCTS

Standard Kynar 500® PVDF Resin

40-Year Residential/20 and 30 Year Commercial Manufacturer's Limited Warranty



| | | | |
|----------------------|-----------------------|----------------------------|----------------------|
| | | | |
| Glacier White SRI-85 | Sierra Tan SRI-60 | Parchment SRI-58 | Ash Grey SRI-57 |
| | | | |
| Sterling Grey SRI-44 | Zinc Grey SRI-39 | Charcoal Grey SRI-25 | Saddle Tan SRI-37 |
| | | | |
| Medium Bronze SRI-36 | Tahoe Blue SRI-31 | Pacific Blue SRI-26 | Hemlock Green SRI-36 |
| | | | |
| Forest Green SRI-24 | Graphite Black SRI-26 | Dark Bronze SRI-22 | Musket SRI-31 |
| | | | |
| Pine Green SRI-25 | Terra Cotta SRI-43 | Tile Red SRI-43 | Colonial Red SRI-37 |
| | | | |
| Retro Red SRI-42 | Matte Black SRI-23 | Matte Mansard Brown SRI-28 | |

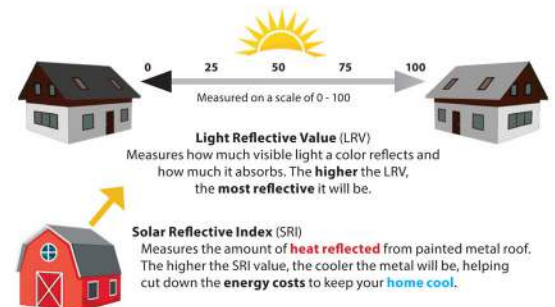
Definitive Matte Collection Kynar 500® PVDF Resin

The Definitive Matte Collection is a suite of Matte finishes, providing Designers with low gloss and low sheen solutions

| | | | |
|------------------------|--------------------|----------------------|--------------------|
| | | | |
| Midnight Bronze SRI-24 | Aged Bronze SRI-23 | Sterling Mist SRI-41 | Black Slate SRI-20 |
| | | | |
| Balboa Grey SRI-23 | Pebble Grey SRI-37 | | |

SRI values listed above are in accordance with ASTM E1980 and are based on actual testing (CRRC) Cool Roof Rating Council SRI values (CA Title 24, ENERGY STAR®) are based on the grouping of colors (color families). CRRC SRI values will differ, as each color is not tested in the color family option. Coatings are low gloss 10-15% sheen.

These printed chips provide a close representation of the colors. Metal Samples are available upon request. Custom colors available. "Oil Canning" is an inherent characteristic of roof and wall products, and not a defect, which is not a cause for panel rejection.



Premium Metallic Kynar 500® PVDF Resin

Premium Pricing Applies



Metallic Silver SRI-60



Champagne SRI-48



Antique Patina SRI-40



Weathered Zinc SRI-39



Copper Penny SRI-50



Premium Finish

Premium Pricing Applies



Vintage® SRI-19

Vintage® is an innovative coating process over a G-90 metallic-coated steel surface. The process creates shade variations from light to dark, the lighter shade exhibiting a grey tone while the darker shade exhibits a bronze or brown tone. The dynamic, pre-aged appearance makes this a beautiful and durable product choice that is also graffiti resistant. Vintage® comes with a 20 year warranty. Warranty can vary by environment, see TMP website for more information.

NOTE: Due to the coating process, Vintage® has a color range. Color can vary from batch-to-batch and have directional variations. Due to color ranges, color matching of this product is not available.

Textured Rustic Rawhide finish provides an unmatched color experience with an engaging combination of color and texture. This textured finish features multi-toned weathered metal design in conjunction with a wrinkled paint system for optimum authenticity. The design interacts dynamically with light to recreate the feel of traditional oxidized metal while minimizing surface sheen.

Supported by a robust warranty. This color pairs beauty and performance. Request your sample today to interact with the stimulating color.



Rustic Rawhide SRI-32



Weathering Materials

These materials change appearance overtime

Rusteel Plus™ (A606)



general appearance before weathering

Rusteel Plus™ is an ideal design for a historic, weathered look. Rusteel Plus™ is best suited for dryer, less humid environments. Rusteel Plus™ has no metallic coating and offers no warranty. The designer should be aware of rust runoff on decks and concrete without gutter protection or separation. Rusteel Plus™ meets ASTM A606-96 Type A. Type 4 has improved corrosion resistance when compared to carbon steel.



general appearance after weathering



Bonderized

Bonderized steel is G-90 galvanized/metallic coated steel put through a phosphate bath, with a layer of Chromate applied and dried, leaving it ready to accept paint. Bonderized is often referred to as "Paint Grip," meaning that it is designed to be primed and painted in the field. Over time, Architects and Designers have begun selecting Bonderized for non-painted applications; they desire a dull gray appearance.

The Bonderizing process does not allow for a consistent pigment or color. The pigment can vary within the same coil batch. Taylor Metal Products cannot guarantee color/pigment of the panels will match within a single order. Bonderized steel has a tendency to scratch when formed and does not store well if wet.

eZinc® Finishes



eZinc Graphite®



eZinc Slate® SRI-18

Designed to endure, 99% pure/natural zinc is a long-lasting material that maintains its integrity over the life of the building. eZinc® doesn't require special maintenance during its long service life. In SLATE, the pre-weathered finish is achieved using a non-polluting phosphate treatment that preserves and respects the initial properties of zinc, while in GRAPHITE, it is pre-weathered to a very dark, almost black, shade of grey.



Real Copper
16 oz. and 20 oz. Copper
(please inquire)



Zinalume® Plus SRI-65
No finish warranty - 25 yr. perforation
warranty.

Zinalume® Plus AZ-55 is a 55% aluminum, 45% zinc.

Due to batch differences, color or spangle matching of this product is not available.



Galvanized G-90 SRI-65
Metallic coating over steel.
No finish warranty, no perforation warranty



| Name | Color Sample | SRI | 24 Gauge Steel | 22 Gauge Steel | 20 Gauge Steel | 0.032 Aluminum | 0.040 Aluminum |
|-----------------------------|--------------|-----|--------------------------|--------------------------|----------------|----------------|----------------|
| Glacier White | | 85 | Stocked | Stocked | Stocked | Stocked | Stocked |
| Matte Black | | 23 | Stocked | Stocked | Stocked | Stocked | Stocked |
| Graphite Black | | 26 | Stocked | Stocked | | Stocked | Stocked |
| Medium Bronze | | 36 | Stocked | Stocked | Stocked | Stocked | Stocked |
| Dark Bronze | | 22 | Stocked | Stocked | Stocked | Stocked | Stocked |
| Charcoal Grey | | 25 | Stocked | Stocked | Stocked | Stocked | Stocked |
| Weathered Zinc | | 39 | Stocked | Stocked | | Stocked | |
| Metallic Silver | | 60 | Stocked | Stocked | | Stocked | |
| Ash Grey | | 57 | Stocked | Stocked | | | |
| Zinc Grey | | 39 | Stocked | Stocked | | Stocked | Stocked |
| Sterling Grey | | 44 | Stocked | Stocked | Stocked | Stocked | |
| Sierra Tan | | 60 | Stocked | Stocked | | Stocked | |
| Real Copper | | — | 16oz. Stocked | 20oz. Stocked | | | |
| Saddle Tan | | 37 | Stocked | Stocked | | | |
| Musket | | 31 | Stocked | Stocked | | | |
| Parchment | | 58 | Stocked | Stocked | | | |
| Matte Mansard Brown | | 28 | Stocked | Stocked | | | |
| Terra Cotta | | 43 | Stocked | Stocked | | | |
| Colonial Red | | 37 | Stocked | Stocked | | | |
| Hemlock Green | | 36 | Stocked | Stocked | | | |
| Tahoe Blue | | 31 | Stocked | Stocked | | | |
| Champagne Metallic | | 48 | Stocked | Stocked | | | |
| Zincalume | | 65 | Stocked | Stocked | | | |
| Galvanized | | 65 | Stocked | Stocked | | | |
| Rusteel Plus™ (A606) | | — | | Stocked | | | |
| eZinc Graphite® (real zinc) | | — | Stocked (please inquire) | Stocked (please inquire) | | | |
| eZinc Slate® (real zinc) | | 18 | Stocked (please inquire) | Stocked (please inquire) | | | |
| Rustic Rawhide | | 32 | Stocked | | | | |
| Vintage® | | 19 | Stocked | | | | |
| Tile Red | | 35 | Stocked | | | | |
| Retro Red | | 42 | Stocked | | | | |
| Forest Green | | 24 | Stocked | | | | |
| Pine Green | | 25 | Stocked | | | | |
| Pacific Blue | | 26 | Stocked | | | | |
| Antique Patina | | 40 | Stocked | | | | |
| Copper Penny | | 50 | Stocked | | | | |
| Bonderized | | — | Stocked | | | | |
| Midnight Bronze | | 24 | Stocked | Stocked | | | |
| Aged Bronze | | 23 | Stocked | Stocked | | | |
| Sterling Mist | | 41 | Stocked | Stocked | | | |
| Black Slate | | 20 | Stocked | Stocked | | | |
| Balboa Grey | | 23 | Stocked | Stocked | | | |
| Pebble Grey | | 37 | Stocked | Stocked | | | |

PVDF is a fluoropolymer that is manufactured under the trademarked names Kynar 500® and Duranar (PPG). Paint finishes containing a minimum 70% PVDF resin meet the high-performance weathering criteria established by the American Architectural Manufacturing Association and are allowed to carry the Kynar500® trademarked name. Zincalume® and Zincalume® Plus are registered trademarks of Bluescope Ltd. Galvalume® is a registered trademark of BIEC International, Inc. Vintage® is a registered trademark of Steelscape, Inc. Kynar® and Kynar 500® is a registered trademarks of Arkema, Inc.