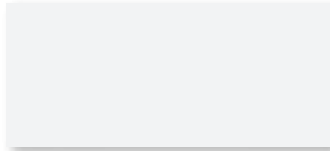
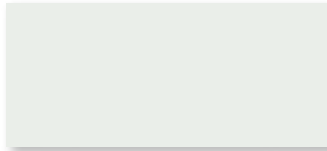


26 Gauge Colors

MS Colorfast45® Paint System



Polar White (80)



White (30)



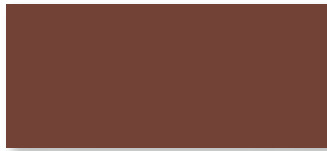
Light Stone (63)



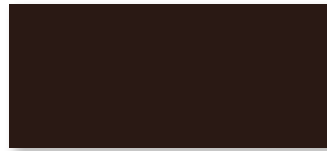
Mocha Tan (22)



Taupe (74)



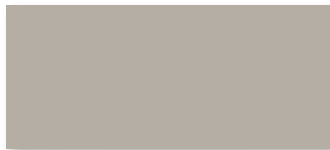
Brown (12)



Dark Brown (44)



Burnished Slate (49)



Ash Grey (25)



Zinc Grey (29)



Charcoal (17)



Black (06)



Red (24)



Forest Green (26)



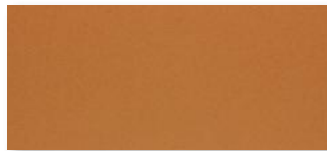
Ocean Blue (35)



Matte Black (106)



Patriot Red (73)¹



Native Copper (190)¹



Galvalume® (41)
Unpainted • 45 Year Material Warranty

All colors have a 45 year limited warranty.

Color swatches shown are close representations but are limited by printing and viewing conditions.

Actual samples are available by request.

¹ Upcharge will apply.

metalsales.us.com



Standard Colors

26 Gauge - Western

CF45 Color Name (Color Code)	Solar Reflectance ASTM C-1549	Thermal Emittance ASTM C-1371	Solar Reflectance Index ASTM E-1980
Ash Grey (25)	0.49	0.86	56
Black (06)	0.33	0.85	34
Brown (12)	0.32	0.86	33
Burnished Slate (49)	0.32	0.86	33
Charcoal (17)	0.35	0.86	37
Dark Brown (44)	0.27	0.86	26
Forest Green (26)	0.27	0.85	26
Light Stone (63)	0.58	0.86	68
Matte Black (106)	0.27	0.86	26
Mocha Tan (22)	0.52	0.86	60

CF45 Color Name (Color Code)	Solar Reflectance ASTM C-1549	Thermal Emittance ASTM C-1371	Solar Reflectance Index ASTM E-1980
Native Copper (190)	0.39	0.89	35
Ocean Blue (35)	0.34	0.86	35
Patriot Red (73)	0.32	0.86	33
Polar White (80)	0.57	0.86	67
Red (24)	0.37	0.86	39
Taupe (74)	0.40	0.86	43
White (30)	0.66	0.86	79
Zinc Grey (29)	0.42	0.86	46
Acrylic Coated Galvalume® - Unpainted • 45 Year Material Warranty			
Galvalume® (41)	0.67	0.14	56



Not all colors stocked at all branches. Custom colors are available, contact Metal Sales associate for more information.

2/2025 1527

MS Metal Sales™

metalsales.us.com

Western Branch Locations

Anchorage, AK: 866.640.7663
Denver, CO: 800.289.7663

Fontana, CA: 800.782.7953
Kelso, WA: 800.431.3470

Spokane, WA: 800.572.6565
Temple, TX: 800.543.4415
Woodland, CA: 800.759.6019